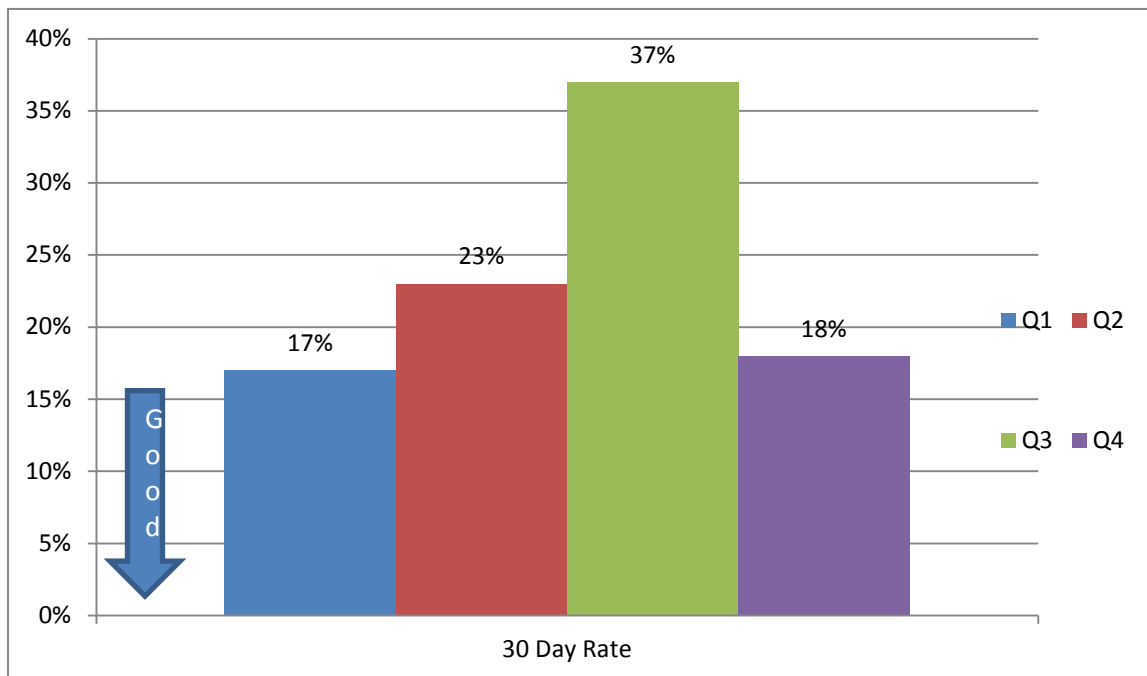


Hospitalizations

The 30 day Hospital Readmission Rate is obtained by using the INTERACT Formula and their criteria:

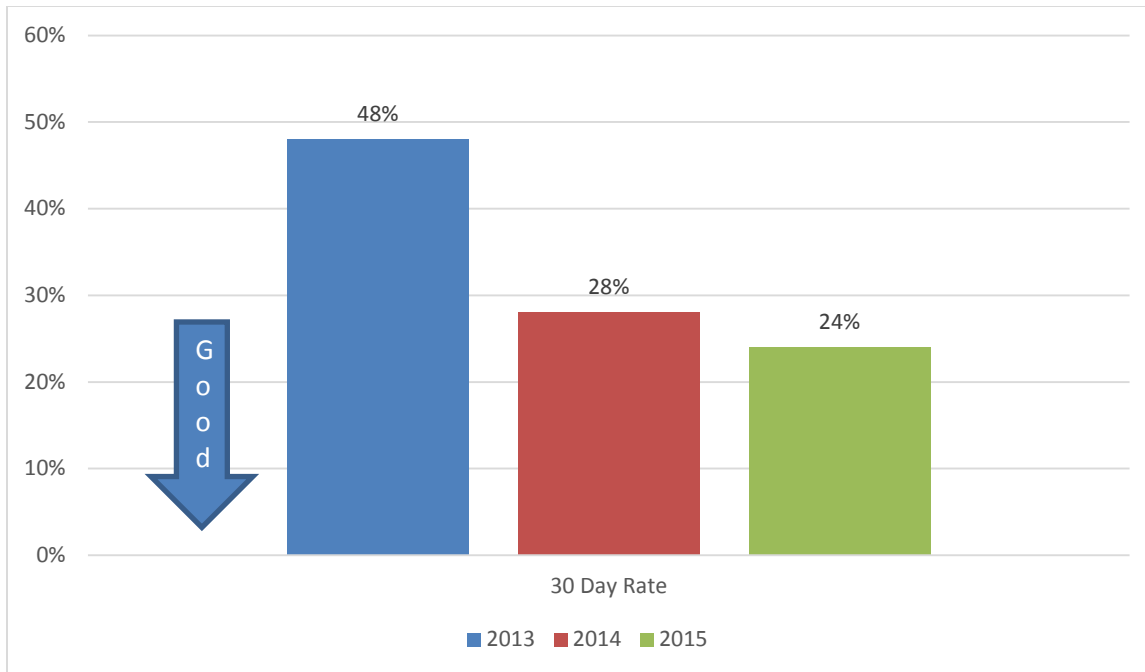
- a. Calculated by indentifying individual clients admitted to the facility after an inpatient hospital stay and following their status for the next 30 days.
- b. The formula takes into consideration the number of inpatient hospitalizations within 30 days of admission to the facility post inpatient hospital stay.
- c. ER only visits and Observation Stay visits are not counted in these numbers.
- d. A client may have more than one stay in the hospital during the 30 day period. Each one is counted into the calculation.
- e. This is a lag measure.

30 Day New Admission Readmission (to hospital) Rate



2014 CMS Goal: 17.5% (All Cause Rate)

Annual Hospital 30 Day Readmit Rates



AHCA: Safely Reducing Hospital Readmissions Goal

Safely reduce the number of hospital readmissions within 30 days during a skilled nursing center stay by an additional 15% or achieve and maintain a low rate of 10% by March 2018.

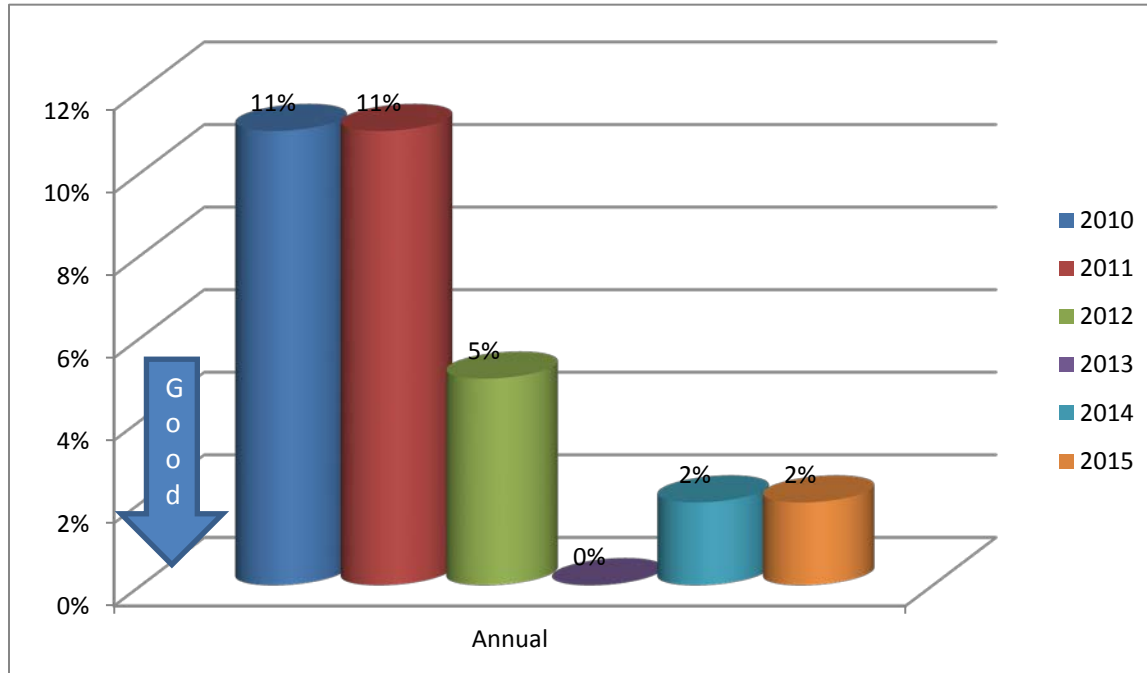
Annual 30 Day Readmission Trends:

A positive trend is seen as follows:

1. 50% reduction in 30 day hospital readmission rate since 2013.
2. 4% reduction in 30 day hospital readmission rate 2014 to 2015.

Pressure Ulcers

Annual PUI Rate



Goal for facility acquired pressure ulcers is <6.7% (CMS/Advancing Excellence)

Trends:

1. More clients admitted with high acuity and multiple issues that pose a high risk for skin breakdown.
2. PUI Rate remained stable at 2% for 2015.